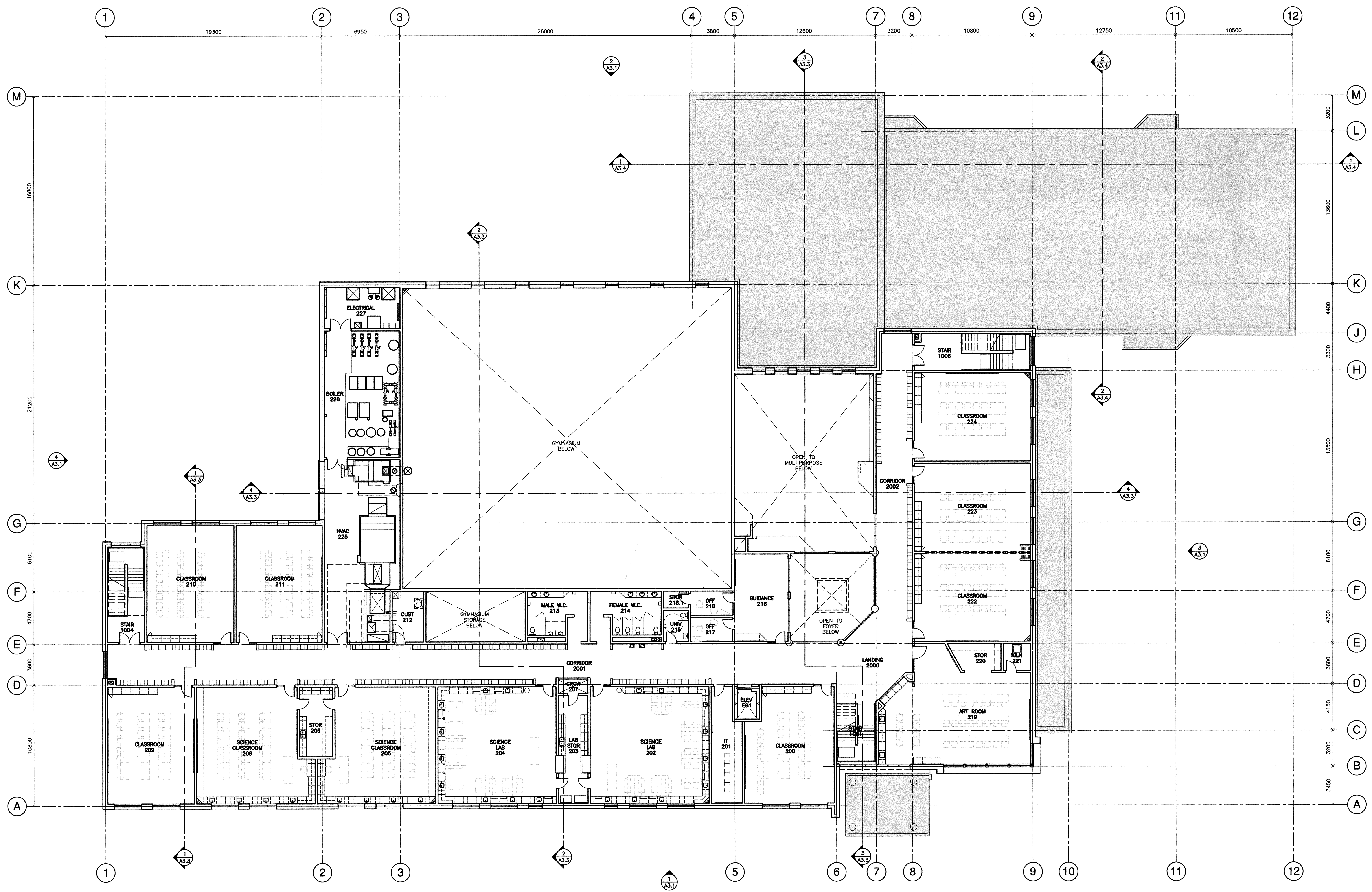


GENERAL NOTES

1. DRAWINGS MUST NOT BE SCALED.
2. ALL DIMENSIONS ARE IN MILLIMETRES UNLESS NOTED OTHERWISE.
3. THE GENERAL CONTRACTOR SHALL VERIFY ALL DIMENSIONS, DATUMS, AND LEVELS PRIOR TO THE COMMENCEMENT OF THE WORK. ALL ERRORS AND OMISSIONS SHALL BE REPORTED TO THE ARCHITECT IMMEDIATELY.
4. VARIATIONS AND MODIFICATIONS TO THE WORK SHOWN ON THESE DRAWINGS SHALL NOT BE CARRIED OUT WITHOUT WRITTEN PERMISSION FROM THE ARCHITECT.
5. ALL DIMENSIONS ARE TO FACE OF GYPSUM WALLBOARD, FACE OF MASONRY OR FACE OF CONCRETE UNLESS NOTED OTHERWISE.
6. DRAWINGS AND SPECIFICATIONS ARE PROPERTY OF THE ARCHITECT. ANY REPRODUCTIONS OF THE DRAWINGS OR SPECIFICATIONS SHALL BE MADE ONLY AFTER WRITTEN AUTHORIZATION FROM THE ARCHITECT AND SHALL REMAIN PROPERTY OF THE ARCHITECT.
7. PATCH AND MAKE GOOD ALL NEW & EXISTING SURFACES AFFECTED BY DEMOLITION PRIOR TO PAINTING TO ENSURE A SMOOTH FINISH. REFER TO ROOM FINISH SCHEDULE.
8. THE GENERAL CONTRACTOR SHALL VERIFY THE LOCATION OF ALL SITE SERVICES WITH THEIR RESPECTIVE UTILITY COMPANIES PRIOR TO COMMENCEMENT OF WORK AND CO-ORDINATE WITH MECHANICAL & ELECTRICAL SUBSTRATES FOR REQUIRED TIE-INS.
9. ROOM NAMES & NUMBERS IDENTIFIED ON DRAWINGS & SCHEDULES ARE FOR CONSTRUCTION PURPOSES ONLY; COORDINATE SUPPLY & INSTALLATION OF ROOM NAME & NUMBER SIGNAGE WITH OWNER.
10. ALL CORRIDOR WALLS ARE FIRE SEPARATIONS WITH NO FIRE-RESISTANCE RATING. FIRE-STOP ALL PENETRATIONS; REFER TO SPECS, COORD W/ MECHANICAL & ELECTRICAL.
11. THE SECOND FLOOR ASSEMBLY SHALL BE A FIRE SEPARATION WITH A 1-HOUR FIRE-RESISTANCE RATING; FIRE-STOP ALL PENETRATIONS. PROVIDE FIRE DAMPERS AS REQ'D; REFER TO SPECS, COORD W/ MECHANICAL & ELECTRICAL.
12. PROVIDE INTUMESCENT COATING TO ALL STRUCTURAL STEEL SUPPORTING THE SECOND FLOOR ASSEMBLY; REFER TO SPECS.



NORTH
OVERALL SECOND FLOOR PLAN
 1 A2.2 1:150

ISSUED FOR CONSTRUCTION

		drawn by DCL approved by MJF date 19 JAN 2018	 141 ST. ANNE'S ROAD, WINNIPEG, MANITOBA R2M 2Z3 260 - 4th STREET, BRANDON, MANITOBA R7A 3G3	NIVERVILLE HIGH SCHOOL HANOVER SCHOOL DIVISION NIVERVILLE, MANITOBA	project 2378 sheet no. A2.2
--	--	--	--	--	--